

Easy Grout™

Pre-assembled
Glass Block Panel System
For Shower & Wall Partitions



Manufactured by:



STARK GLASS BLOCK
4018 12th St.N.W.
Canton, Ohio 44708



INSTRUCTION GUIDE

www.starkglassblock.com

2006 © PD-12 INC Canton, Ohio 44708

EasyGrout Panel Installation

1



Apply a thick bead of silicone to center of sill and jam the height and length of panel.

2



Insert a Panel anchor into the top of each panel on the end that meets the wall.

3



Set the first panel on the curb and push up to wall. Panel should be 1/8" from wall. (more if wall leans in at top).

4



See that the panel is plum and level. Drive a screw through the upper hole in wall anchor. If attaching to marble or tile, predrill with a 5/32" masonry bit. Recheck panel. When perfectly plum drive in a second screw into lower hole.

5



Apply a bead of silicone to the wall the height of the second panel. Apply two beads to top of spacer of first panel.

6



Place the second panel on top of the first. Push up to wall until vertical joints line up. Plum panel and attach panel anchor to wall. (Tip...If the panel is up against the anchor of the panel below it, and the joints don't line up; pry the lower panel away from the wall until they do.)

7



Repeat the same steps on all other panel sections.

www.starkglassblock.com

8



Because the top panel cannot be anchored it will rely on the silicone at the jam and between panels to hold it in place. Some top panels may need to be braced temporarily overnight to cure.

Grouting

9



10



Follow instructions on grout bucket. Water measurement is crucial. Add water slowly. This grout resists the water at first and can become soupy if not careful. Let grout “slake” or sit in the bucket for at least 5 minutes (10 for colder job conditions) and then remix. This is critical for maximum grout strength. Apply grout to all seams except where the glass block meets wall and sill. Fill all voids and compact into seams of spacers with rubber grout float.

Use clean 45 degree water and wipe down block with a tile sponge. Wipe all joints and rinse after each pass (“clean swiping”). Rinse bucket and replace with clean water often. After this is done, wait 20 minutes to 1 hour depending on temperature, then repeat this process. Grout will start to cure and harden within 45-90 minutes depending on room temperature. After grout is dry, polish of haze with a clean rag.

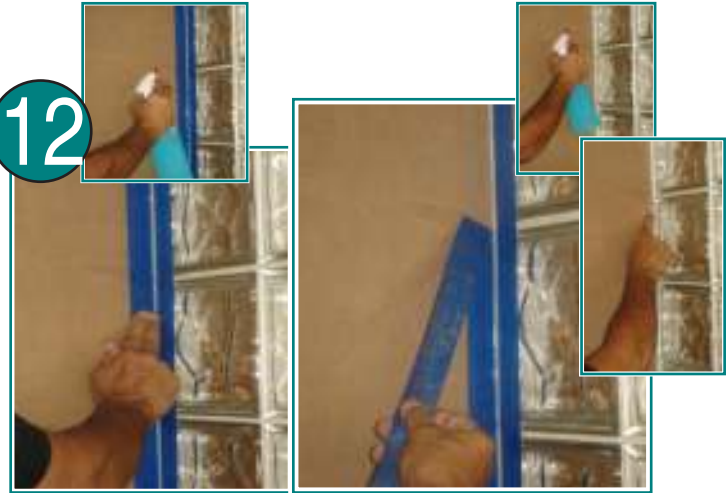
Caulking

11



Make sure grout is completely dry. Wipe all dust from block, jamb, and sill. If there is any oil present, wipe with alcohol. Now apply blue masking tape to panel 1/8" from edge of glass. Also apply to wall and sill on both sides of panel. Apply sealant to perimeter, completing one side at a time. Spray tooling solution on joint (10% alcohol to water mixture). Using a Caulk Rite tool strike the joint, wiping the tool clean when sealant builds up on it.

12



Spray the tooled joint again with a soapy water mixture (1 tbs dish soap to a full spray bottle of water) and smooth out the joint with your finger. When you have the desired finish, remove the tape, pulling it at a 45 degree angle. Once the tape has been removed, spray the joint and run your finger along it one more time to smooth out any imperfections from removing the tape. Repeat this process until all joints are sealed.